

---

## CRX INSTALLATION GUIDE

This guide provides an overview of CR7 and CR12 field computers connections as well as drawings that illustrate the cab connections for various machine configurations.

### IMPORTANT SAFETY INFORMATION

This is a safety-alert symbol. When you see the symbol below on the device, be alert because there is the potential for personal injury.



Follow the recommended precautions and safe operating practices.

---

## CR7 CONNECTIONS

The image below shows the connections on the back of the CR7 that will be used for installation. Please note that, depending on machine configuration, some of these connections may not be used.

**FIGURE 1. Back of CR7**



### CR7 WIRING ILLUSTRATIONS

The illustrations on the next few pages show CR7 wiring diagrams for various cabling generations with optional accessories and are for reference only.

FIGURE 2. CR7 Basic Installation

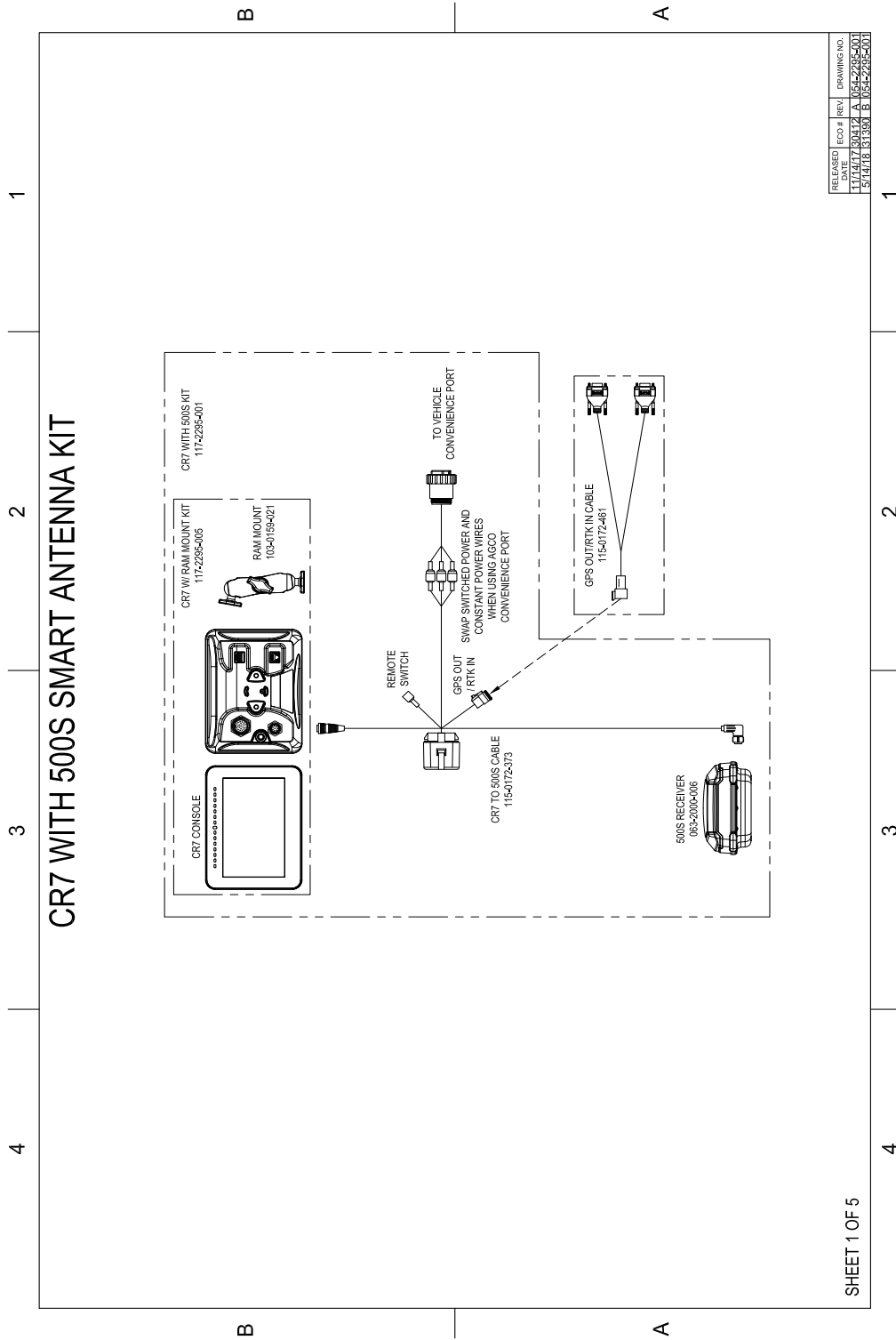


FIGURE 3. Gen II Cabling CR7 SmarTrax/AccuBoom Only

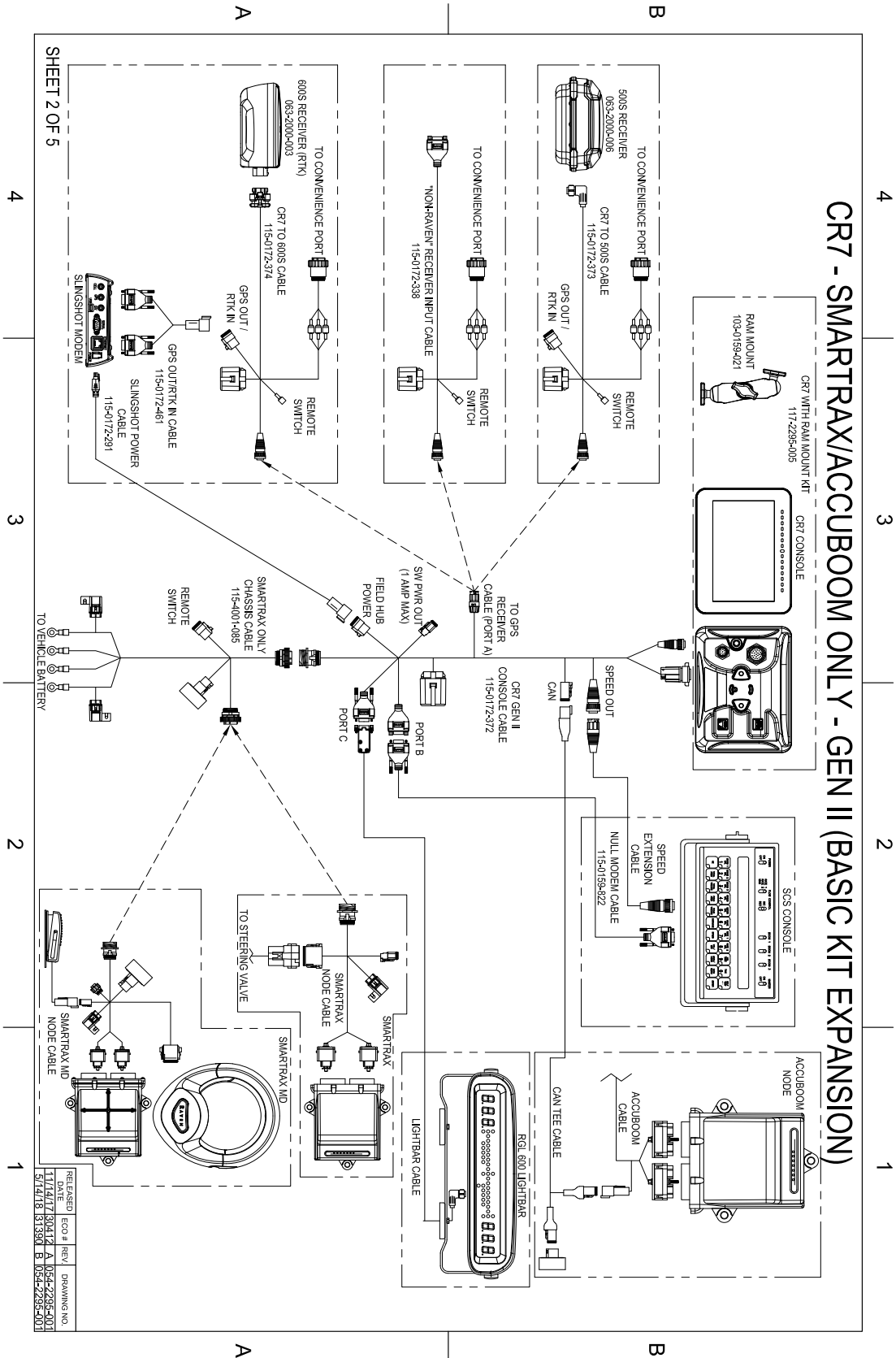


FIGURE 4. Full Gen II Cabling CR7 SmarTrax/AccuBoom

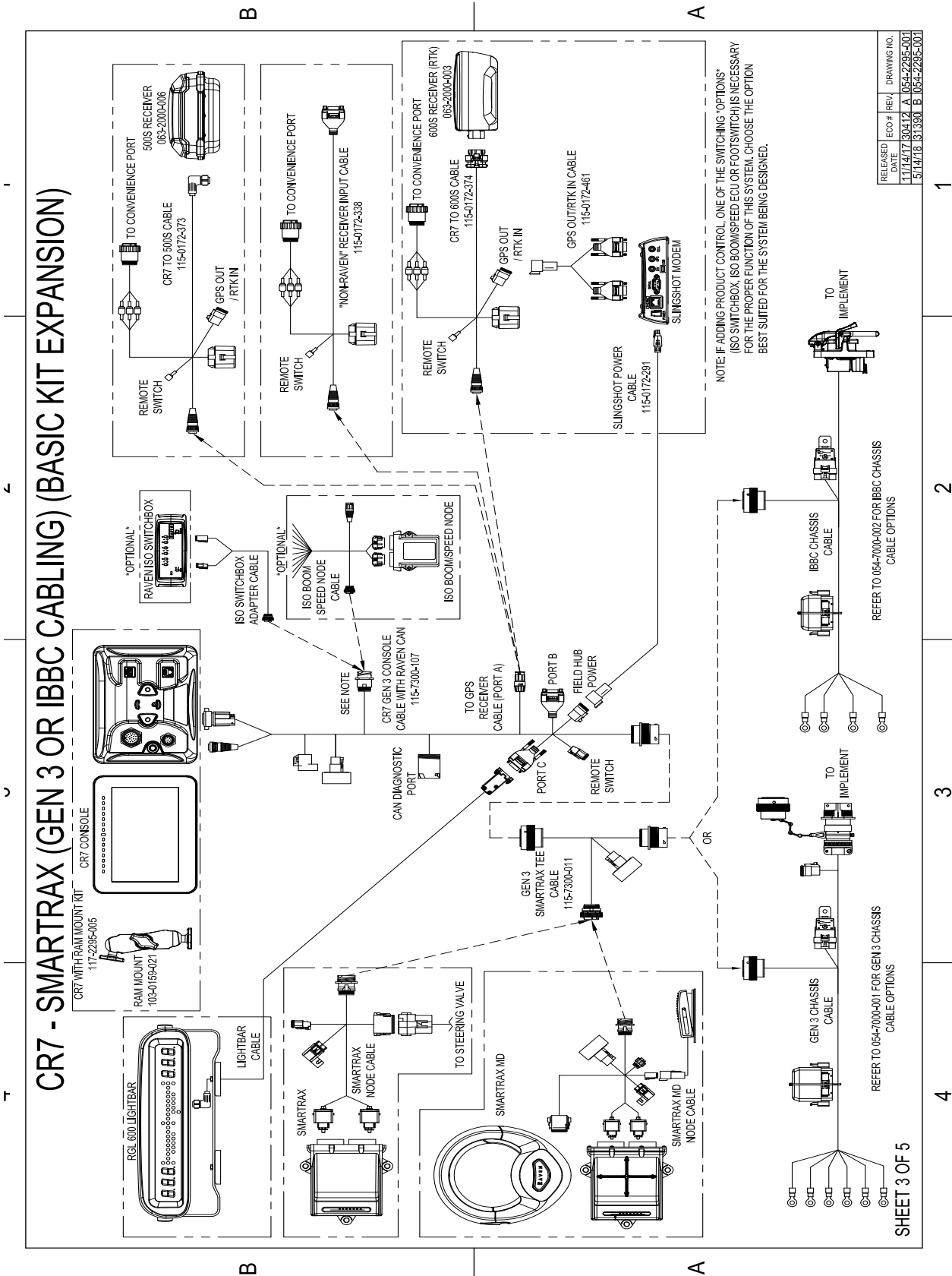


FIGURE 5. Gen 3 or IBBC Cabling CR7 SmarTrax/AccuBoom

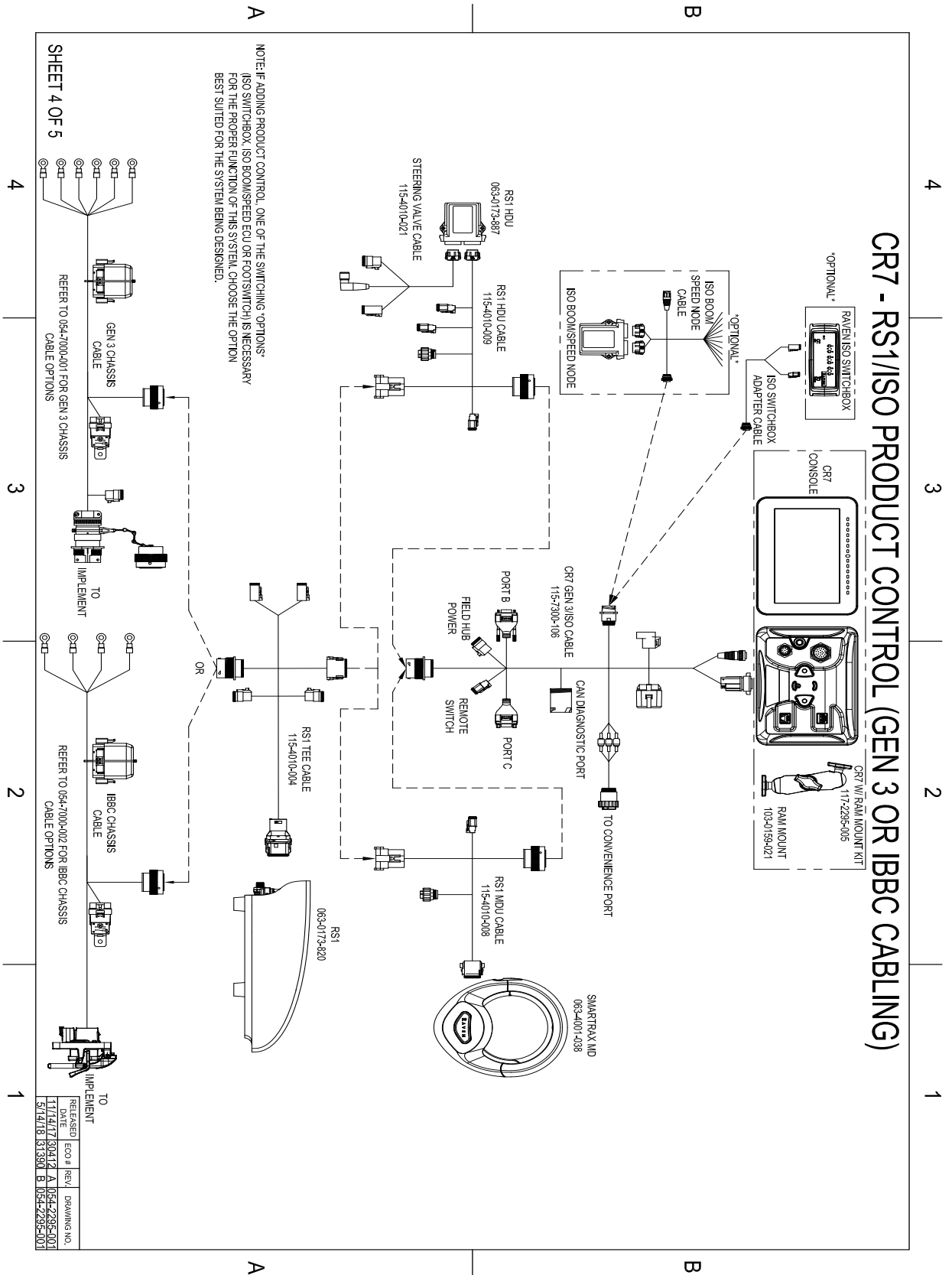
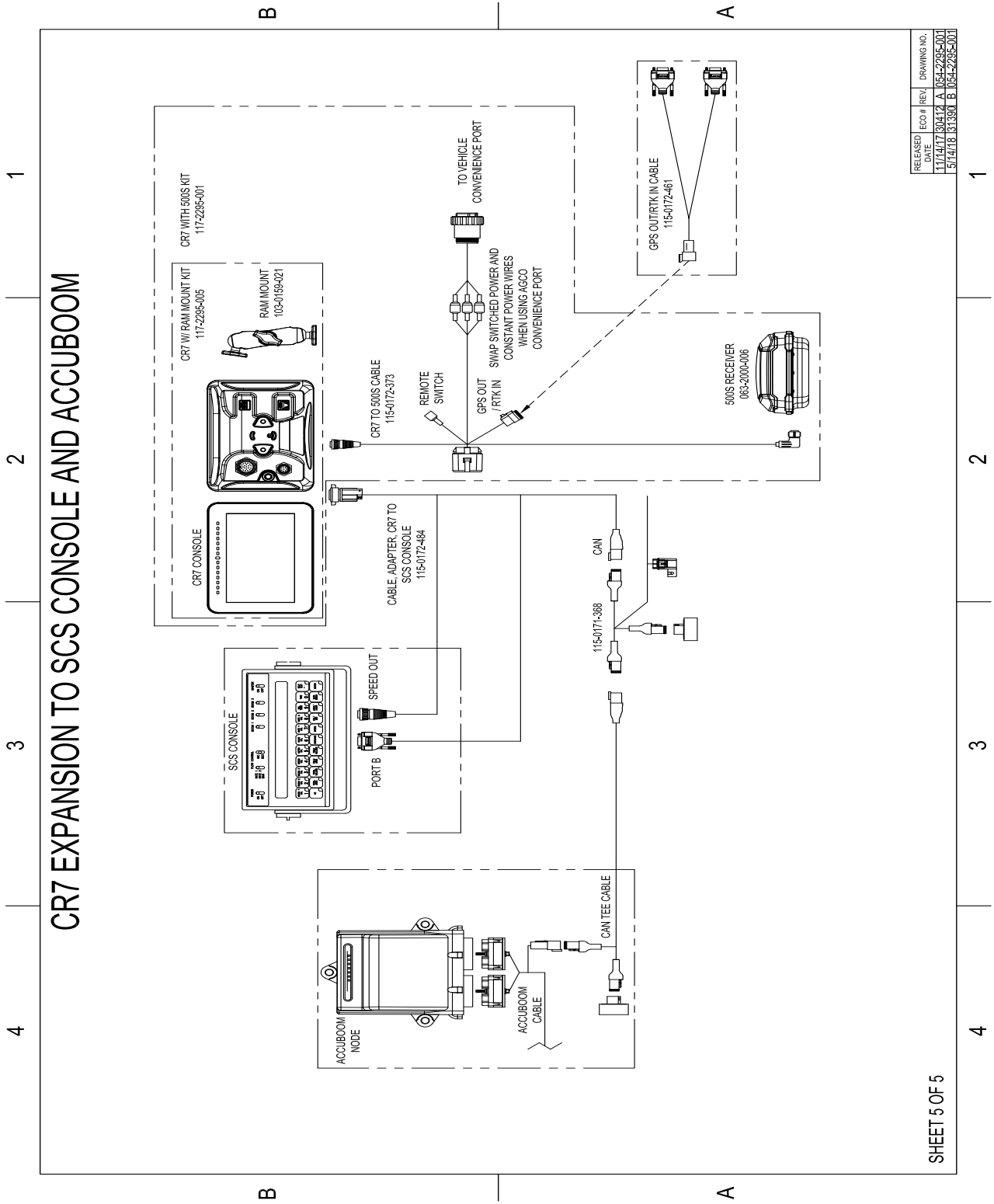


FIGURE 6. Gen 3 or IBBC Cabling CR7 SmarTrax ISO Product Control



RELEASED	ECO #	REV.	DRAWING NO.
11/14/17	130412	A	0542295-001
5/14/18	131391	B	0542295-001

SHEET 5 OF 5

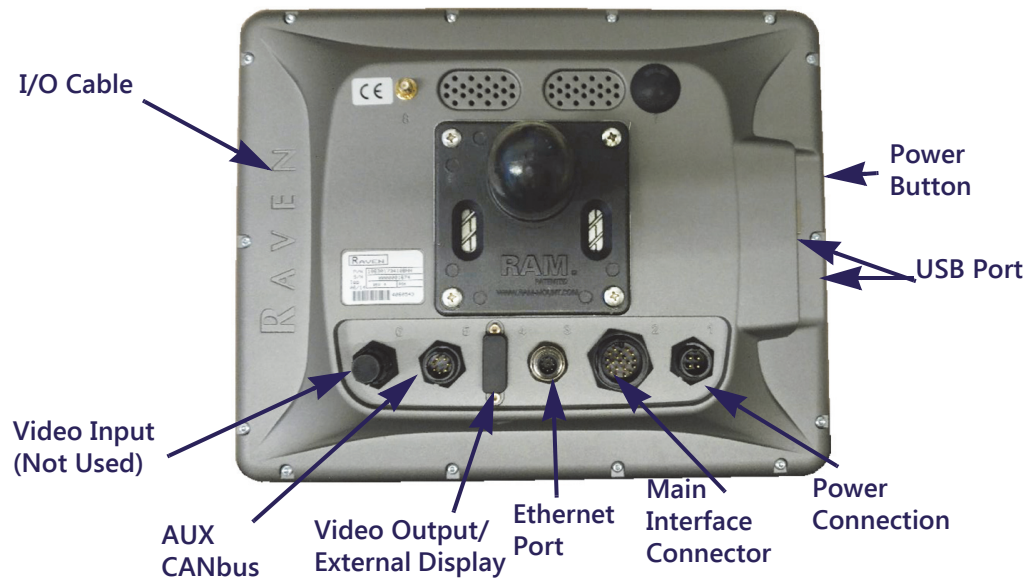
---

## CR12 CONNECTIONS

The image below shows the connections on the back of the CR12 that will be used for installation. Please note that, depending on machine configuration, some of these connections may not be used.

**FIGURE 7. Back of CR12**

---



## CR12 WIRING ILLUSTRATIONS

The illustrations on the next few pages show CR12 wiring diagrams for various cabling generations with optional accessories and are for reference only.

FIGURE 8. CR12 Basic Installation

